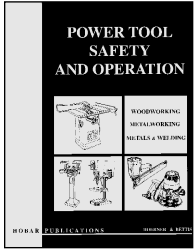


**POWER TOOL SAFETY AND OPERATION**



This manual features the safety and operation of thirty popular woodworking, metalworking, and metals and welding power tools. The areas covered on each power tool include parts identification, safe operational procedures, general safety practices, and ten completion questions. This manual was developed by two college mechanics professors with more than sixty years combined shop experience at the high school and college level. In addition, these materials were tested in a college research program with positive results. HOBAR

combined shop experience at the high school and college level. In addition, these materials were tested in a college research program with positive results. HOBAR

**Student Manual:** 126 pages, 30 illustrations, 1998, softcover  
Order Number: 173.....\$10.45 each, \$8.36 (10 or more)

**Teacher's Answer Key:**  
Order Number: 173TK.....\$2.75

**POWER TOOL SAFETY AND OPERATION: INSTRUCTOR'S PACKET**

To aid the instructor in teaching power tool safety and in using the above manual, an instructor's safety teaching packet was developed.

**This packet includes** one Student Manual, #173; One Teacher's Answer Key, #173TK; Suggested Teacher & Student Activities over the 30 tools; 30 Safety Exams, #631; and 30 Transparency Masters, #373.

**Note:** Items may be purchased separately, except the suggested activities. Please see individual items for complete descriptions. HOBAR

Order Number: 273 .....\$38.50

**11" X 17" SAFETY POSTERS**



These 24, two color posters will add greatly to your shop safety instructional program. They are laminated for easy display in the shop area near the specific power tool. There are four posters on general safety and 20 on the common carpentry and metal power tools: band saw, belt grinder, bench saw, disc sander, drill press, gas forge, grinder, jig saw, jointer, metal cutting band saw, metal lathe, planer surfacer, portable circular saw, radial arm saw, router,

arc welder, oxy-acetylene welder, and wood lathe. These posters are directly related to Hobar's Power Tool Safety and Operation manual, instructor's packet, and safety exams. Each poster displays in large lettering 2 or 3 positive safety points related to the particular tool. A must for any shop program! HOBAR

Order Number: 1179 .....\$41.95

**SAFETY ZONE MARKING TAPE**

Yellow, 2" x 36 yd.  
Order Number: G-3M471 .....\$19.95



**POWER TOOL SAFETY OPERATION EXAMS**

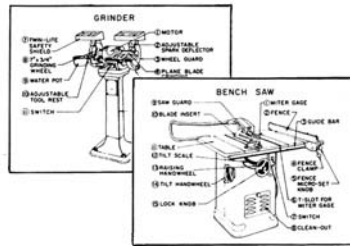
These thirty safety exam masters were developed to be used with Hobar's *Power Tool Safety & Operation manual #173*. Each exam on one power tool contains fifteen questions answered safe and unsafe and can be duplicated for student use. HOBAR

- Bench Saw
- Jig Saw
- Band Saw
- Sabre Saw
- Radial Arm Saw
- Portable Circular Saw
- Reciprocating Saw
- Finishing Sander
- Belt Sander
- Disc Sander
- Wood Lathe
- Planer Surfacer
- Router
- Jointer
- Drill Press
- Portable Drill
- Grinder
- Belt Grinder
- Portable Grinder
- Metal Cutting Band Saw
- Metal Lathe
- Gas Forge
- Arc Welder
- Oxyacetylene Welding
- Power Miter Saw
- Portable Power Planer
- Shaper
- Nailer And Stapler
- Portable Metal Cutting Band Saw
- Air Impact Wrench

**Set of Thirty Power Tool Safety Exams:**

Order Number: 631 .....\$28.35

**POWER TOOL SAFETY AND OPERATION TRANSPARENCY MASTERS**



The 30 power tools covered in the student manual, *Power Tool Safety and Operation #173*, were made into transparency masters. The parts of the 30 tools are given in large letters for easy reading from the projector screen.

The sheets could be used as worksheets by blocking out the lettering. This set is a must for teaching the power tool safety and operation unit. HOBAR

Order Number: 373TM .....\$10.00

**8 1/2" X 14" SAFETY POSTERS**



This set of 13 laminated safety posters will enhance your shop safety instructional program. Thirteen of the most common woodworking and metalworking stationary power tools are included in the set: bench saw, radial arm saw, jointer, planer surfacer, band saw, jig saw,

disc sander, wood lathe, metal lathe, grinder, drill press, metal cutting band saw, and belt grinder. Each poster covering one power tool includes part identification and 15 to 20 operating instruction procedures. The posters are printed on safety yellow cover stock with a black caution edge marking to catch the operator's attention. They may be posted directly on the power tool or on the wall beside. The laminated surface assures easy cleaning and helps maintain durability. Supplements Hobar's *Power Tool Safety and Operation Packet #273*. HOBAR

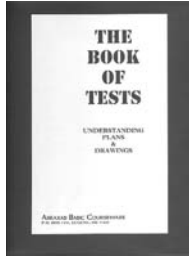
Order Number: 783 .....\$17.95

## THE BOOK OF TESTS

## SAFETY TESTS FOR WOODSHOP

Basic Shop Safety—Part One, Basic Shop Safety—Part Two, Introduction to Shop Safety, Hand Tool Safety, Safe Use of the Chisel, Portable Power Tool Safety, Power Equipment Safety, Radial Arm Saw Safety, Jointer Safety, Planer Safety, Dado Set Safety (Table Saw Application), Circular Table Saw Safety, Band Saw Safety, Shaper Safety, Router Safety, Drill Press Safety, Scroll Saw Safety, Lathe Safety, Disc Sander Safety, Belt Sander Safety (Stationary), Grinder Safety, Clean Shop/Safe Shop, Test Correction Form, Safety Instruction Record, Parent Notification Form, and Incident Report Form.

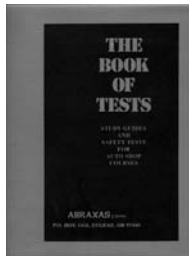
Order Number: BT-1 .....\$86.00



## SAFETY TESTS FOR AUTO SHOP

Basic Auto Shop Safety—Part One, Basic Auto Shop Safety—Part Two, Introduction to Auto Shop Safety, Using Hand Tools Safely—Part One, Using Hand Tools Safely—Part Two, Portable Power Tool Safety, Power Equipment Safety, Safe Use of Floor Jacks, Safe Use of the Hoist, Safe Use of the Crane & Overhead Chain Hoist, Safe Battery Handling, Safe Use of Jumper Cables, Handling Hazardous Liquids Safely, Drill Press Safety, Pedestal Grinder Safety, Basic Electrical Safety, Fire Prevention, Test Correction Form, Safety Instruction Record, Parent Notification Form, and Incident Report Form.

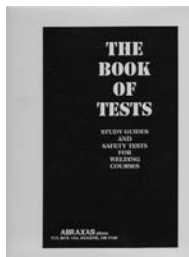
Order Number: BT-2 .....\$86.00



## SAFETY TESTS FOR WELDING

Basic Shop Safety, Hand Tool Safety, Portable Power Tool Safety, Power Equipment Safety, Oxyacetylene Welding Safety—Part One, Oxyacetylene Welding Safety—Part Two, Safe Cylinder Handling & Storage, Arc Welding Safety—Part One, Arc Welding Safety—Part Two, Drill Press Safety, Pedestal Grinder Safety, Basic Electrical Safety, Fire Prevention, Illustration: Regulator, Illustration: Torches, Illustration: Torch Nomenclature, Illustration: Arc Welder Clamps, Cable Lugs, etc., Test Correction Form, Safety Instruction Record, Parent Notification Form, and Incident Report Form.

Order Number: BT-3 .....\$86.00

SAFETY ORIENTATION 

Used by a wide variety of businesses and industries, this interactive CD-ROM provides an overview of common safety issues associated with the workplace, such as safe work habits, personal protective equipment, hazard communication, and fire prevention. Students can check their basic knowledge by taking a pre-test or move directly to any section of the program. Clearly stated learning goals begin each unit of instruction, such as:

- Safe Work Habits
- Personal Protective Equipment
- Hazard Communication
- Fire Prevention

Students can check their mastery of the material by taking a post-test. A handy reference section contains:

- Key points
- Glossary of terms
- Applicable OSHA regulations

**Windows CD-ROM:** 2002. SHOPWARE

Order Number: SW30119 .....\$99.95

MULTIMEDIA WOODSHOP SAFETY 

Multimedia Woodshop Safety uses video and animation sequences, along with still photos to provide an overview of shop practices including stationary woodworking equipment, portable power and hand tools, as well as material storage and handling. In addition to the usual shop safety practices, the user is also reminded of the hazards of horseplay, loose clothing, and lack of concentration on the job. 1996. For Windows & Mac. SHOPWARE

Order Number: SW20466.....\$69.95

## MULTIMEDIA AUTOSHOP SAFETY

Multimedia Autoshop Safety uses video, animation, and still photos to examine the topics of general shop safety, fire safety and prevention, first aid, and safe tool use for mechanics. The auto workshop is portrayed as a work site of numerous potential hazards, while at the same time the viewer is taught how to cope with the challenges of volatile auto products, damaged electrical cords, and welding cylinders and their contents. 1996. For Windows & Mac. SHOPWARE

Order Number: SW20463.....\$69.95

## MULTIMEDIA WELDING SAFETY

This multimedia CD-ROM examines not only the welding process itself, but also safety practices. Through a combination of schematic diagrams, video and animation sequences, and still photos of tanks, regulators, and gauges, welding makes sense, even to the novice. The user is led to explore topics including welding torches, resistance spot welding, arc welding, and wire-feed welding. Navigation through the program is user friendly, with options that allow users to review or by-pass lesson segments. A teacher's utilities section is also included, allowing teachers to monitor student performance and completion of lesson materials. 1996. SHOPWARE

**Windows CD-ROM:**

Order Number: SW20461.....\$69.95

## MULTIMEDIA ELECTRICAL SAFETY

Using video, animation, and still photos this program begins with general safety practices and engages the user in an excursion into very specific rules. A subprogram about electrical tools provides a description of the functions and features of each tool along with its picture. Within Fire Safety, the user is led through shop inspection for fire prevention and then through criteria used to select the proper extinguisher for the job. Using a Meter is a thorough demonstration of the electrical measurements of resistance, voltage, and amperes. Not only does it show how to measure these values, but also analyzes the meaning of the data collected. 1996. For Windows & Mac. SHOPWARE

Order Number: SW20458.....\$69.95

**Order the series and save!**

**Windows CD-ROM:**

Order Number: SW20503.....\$249.00



### SAFETY FIRST: SHOP SAFETY VIDEO SERIES

#### AUTO SHOP SAFETY

Shows the proper way to operate hydraulic jacks, lifts, and chain falls. Also covered are the proper procedure for recharging batteries, disposing of old batteries, and how to handle battery acid and other corrosive materials. The best way to clean oil spills to prevent falls is discussed along with preventing fires and how to contain a fire if one should occur. Provides a step-by-step procedure for pulling a car into a shop and discusses the importance of proper ventilation to prevent asphyxiation. Also covers the safe way to remove the radiator cap on a vehicle that has over-heated. 30 minutes, 1995. CAMBRIDGE

DVD Order Number: CCP14466-D .....\$79.95

#### WELDING SHOP SAFETY

Shows the proper way to store tanks, hoses, gauges, and cutting/brazing torches. Also covers the basics of testing lines for leaks, attaching gauges to tanks, and adjusting pressure settings to proper levels. Covers a variety of welding processes including MIG, TIG, and oxyacetylene. The most common concerns of welders are discussed including proper grounding of the machine and the work piece, correct applications of commercial gases, and maintaining weld tips. 30 minutes, 1995. CAMBRIDGE

DVD Order Number: CCP14465-D .....\$79.95

#### ELECTRICAL SAFETY

Gives a basic explanation of electricity, what it is, and how it affects us. Also covered is the color coding of wire and what each color means, the role of circuits and circuit breakers, and fuses and how to replace them. The program then examines insulation and how it works, the various hand tools used in electrical work, and what gauge wire to use in certain applications. The video also covers preventing electrical shock and how to treat a person who has received an electrical shock. 30 minutes, 1995. CAMBRIDGE

DVD Order Number: CCP14463-D .....\$79.95

#### WOODWORKING SAFETY

This program shows the proper way to operate the most widely used woodworking machines and examines special safety guards and practices specific for each tool. It also covers the most common hand tools and their proper applications. The importance of a clean working environment, preventive maintenance on machinery, and using the correct tool for each job is covered in detail. Also covered are how to check power cords for defects, sharpening and replacing saw blades, and correct body position when using equipment. 30 minutes, 1995. CAMBRIDGE

DVD Order Number: CCP14464-D .....\$79.95

**Order the series and save!**

DVD: 4 DVDs above  
Order Number: CCP14462-D .....\$289.00



#### FIRE SAFETY

Used in industry and manufacturing for training and certification, this informative, interactive CD-ROM combines video demonstrations, easy-to-use navigation, pop-quizzes, and tests to provide students with an understanding of how fires start, how they can be prevented, and how they can be controlled. Windows CD-ROM. © 2002 SHOPWARE

Order Number: SW30116 .....\$99.95



#### BASIC SHOP SAFETY

This special VideoActive tape combines live-action presentations with quizzes as it emphasizes the importance of wearing personal protective equipment over clothing and around eyes and ears when working in a lab or shop environment. Methods to prevent fire, chemical, and electrical hazards are also stressed. Learn how to lessen shop injuries with step-by-step emergency guidelines, including first aid steps and procedures. A supplement (quizzes and answers) is included. 27 minutes, 1997. CEV

DVD Order Number: CEV865D .....\$115.00



#### LARGE METAL POWER TOOLS

Safety and proper operating procedures are demonstrated for the following metal power tools: drill press, metal shear, abrasive cutoff machine, horizontal metal cutting band saw, and grinder. Also included are sharpening techniques for a twist drill, wood chisel, metal cold chisel, and wood hatchet; grinding techniques for a mushroom head on a metal punch and claw hammer; and techniques for dressing a grinder wheel with a star-type wheel dresser. 46 minutes, 1992. CEV

DVD Order Number: CEV800D .....\$89.00



#### LARGE WOOD POWER TOOLS I

Safety and proper operating procedures are demonstrated for the following large wood power tools: table saw, drill press, disc sander, and belt sander. Also included are miter cuts at different angles, ripping, crosscutting, and making dado and rabbet cuts with the table saw. 35 minutes, 1992. CEV

DVD Order Number: CEV784D .....\$95.00



#### LARGE WOOD POWER TOOLS II

Safety equipment to wear, accident prevention, and the proper operating techniques for large wood power tools are provided on this video. Tools discussed are: jointer, planer, radial arm saw, and vertical band saw. Also included are miter cuts at different angles, ripping, and crosscutting with a radial arm saw. 36 minutes, 1991. CEV

DVD Order Number: CEV785D .....\$95.00

#### DEVELOPING SAFETY SKILLS FOR SHOP OR HOME



Ideal for classroom use, industry safety programs, and self-study, it illustrates the safe use of tools, machinery, and equipment, building the reader's awareness of safety conditions and analytical skills. This manual outlines the skills necessary to work safely with electricity, chemical, and fire; teaches ladder safety skills; identifies ANSI safety color codes; and addresses safety skills for the workplace, laboratory, and home. AAVIM

100 pages, 2003, softcover

Order Number: 903N .....\$25.00 each, \$22.50 (10 or more)

**CD-ROM Test Bank:** Includes printable and self-scoring tests in both ExamView and Microsoft Word formats. For Windows and Mac.

Order Number: 903CD .....\$35.00

**WORK APRONS**

9-ounce cotton denim bib style apron. Floating pencil pocket chest will not spill contents when the wearer bends at the waist. Comes with neck and waist ties. Not fire retardant. 29" W x 40" L.

Order Number: DBA .....\$5.25 each,  
.. \$4.75 (10 or more)

**ALL-LEATHER BIB STYLE APRON**

Protective clothing designed for safety, comfort, appearance, freedom of movement, and durability. Adjustable waist and neck straps.

24" (60.96 cm) wide x 42"

Order Number: 12166.....\$32.69

**FIRE BLANKET AND TOTE PAK**

The perfect first aid and fire blanket. It can be used to keep shock victims warm and to smother clothing fires. Fire blankets are a must for welding areas, and a great idea for car trunks and home first aid use. A specially designed pouch completely encloses the blanket, yet it can be opened with one easy motion. The Tote Pak can be easily hung and a heavy duty strap is provided so that it can be quickly carried to needed locations. The blanket is 62" x 84" and the Tote Pak is 13 1/2" x 16" x 4 1/2".

Order Number: BTPCO .....\$49.00

**FIRE BLANKET AND CABINET**

This is a wall hung, 22 gauge metal cabinet, painted bright red, with white silk screen lettering. Complete with a 100% woven olefin core wool blanket, which has a natural flame retardancy. Inspection slots in the cabinet allow for the fire inspector to see the blanket. The blanket can be used to wrap a person in, if his or her clothing catches fire, or to smother flames.

**Cabinet Size:** 16-1/2" long x 5-1/2" deep x 13-1/2" high

**Blanket Size:** 62" x 84"

Order Number: 601FB .....\$106.50

**HEARING PROTECTOR**

Reduces harmful noise with ear cups that feature polyfoam ear cushions for extra comfort. Cushioned three position headband adjusts to any size head. NRR=26.0

Order Number: 23400 .....\$17.95

**STEINER FIRE STOP®  
FINISHED PROTECTIVE GARMENTS  
IN VISUAL GREEN**

These garments have a permanent fire retardant finish. The fabric remains fire retardant through repeated laundering. There is no irritation or toxicity; Roxel is antistatic, rot and mildew resistant, and lightweight, but with excellent wearing qualities.

**FULL 30" (76.20 CM) LONG JACKET**

Inside pocket and adjustable wrist snaps.

**Size 36-38, small**

Order Number: 10300 .....\$17.85

**Size 40-42, medium**

Order Number: 10301 .....\$17.85

**Size 44-46, large**

Order Number: 10302 .....\$17.85

**Size 48-52, x-large**

Order Number: 10303 .....\$17.85

**BIB STYLE APRON**

Adjustable waist and neck straps.

27" (68.58 cm) wide x 40"

Order Number: 10326.....\$9.00

**MULTI-PURPOSE FACE SHIELD**

Clear Anti-Fog Shield with Flip-up Shade 8 IR. This is the only face shield in the market that meets ANSI Z49.1 Standards for plasma cutting.

Order Number: 32181.....\$44.29 each,  
\$35.43 (10 or more)

**FACE SHIELDS**

**Face Shield Headgear** – positive lock.

Order Number: 39000.....\$10.85

**Face Shield** – 8-1/2" x 12" x .040", clear.

Order Number: 35000.....\$6.95

**Face Shield** – 8" x 16" x .040", clear.

Order Number: 35100.....\$9.95

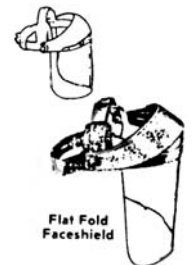
**Face Shield** – 8" x 16" x .060", No. 5 shade.

Order Number: 35150.....\$26.25

**Oxyacetylene Faceshield** – Adjustable

headgear with foam sweat-band. Plastic visor 8" x .060" thick, No. 5 shade.

Order Number: OXY-FS.....\$29.50

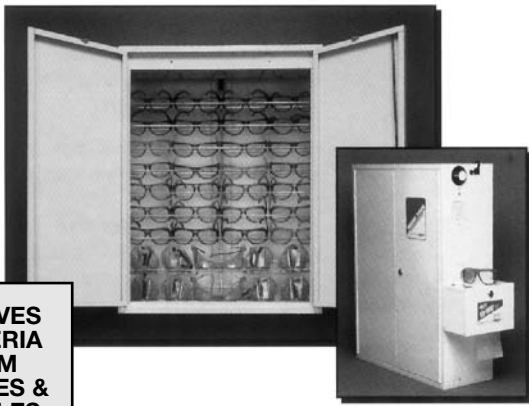
**WELDING GLOVES**

All leather gauntlet type welding gloves. Full, large size designed to fit natural hand contour.

Order Number: LGG-1.....\$8.50  
\$7.65 (10 or more)



**TOLL-FREE: (800) 846-7027**



**REMOVES BACTERIA FROM GLASSES & GOGGLES**

**SELLSTROM MONITOR/STORAGE UNIT**

**Sellstrom Monitor—Germicidal Cabinet**

Universal rack holds 6 pair of protective glasses or 5 pair of cover goggles per shelf, 8 shelves, automatic timer controls built in germicidal lamp. Dimensions: 24–1/2" wide, 32" high, 9–1/2" deep, factory assembled with door locks.

Order Number: 2000-90494.....\$695.00

**Sellstrom Monitor with glasses and goggles**

This unit contains (1) 2000-90494 Monitor with 28 pairs of 77001 protective glasses and 6 pair of No. 88210 goggles.

Order Number: 2000-90494/WPS.....\$835.00

**STA-CLEAR LENS CLEANING STATION**



**Pre-Moistened Lens Cleaning Tissues**

Cleans plastic and glass without streaking, anti-fog, antistatic. Handy self-dispensing box contains 100 single packets.

Order Number: 23490.....\$8.95



**Metal Lens Cleaning Station**

Complete with 1000 tissues and pump spray bottle. Equipped with a lock and fastens to wall.

Order Number: 23470.....\$59.95



**Sta-Clear Lens Cleaning Tissue**

Antistatic, anti-fog cleaning solution impregnated in tissues. Needs only water to activate. Box of 1000 tissues.

Order Number: 23480.....\$18.35

**NON-TOXIC PARTICLE MASK**



This double absorbent filter material screens out dusts, lets air pass freely. Package of 50

Order Number: 8500.....\$10.00



**SELLSTROM 20/20 SAFETY GLASSES**

Excellent peripheral vision, 3-way protection (front, top, and sides), lightweight, and durable. 64mm lens meet all requirements of ANSI Z87.1.

**Charcoal Smoke frame color / clear poly lens**

Order Number: 77001.....\$9.50 each, \$7.60 (10 ore more)

**SELLSTROM SAFEGUARD SAFETY GLASSES**

Meets ANSI Z87.1, 1989 and CSA Z94.3-M88 standards. 58mm polycarbonate lenses.

**Charcoal frames. Clear lens.**

Order Number: 78001.....\$9.50 each, \$7.60 (10 or more)



**SELLSTROM SONIX II**

The plastic frame with adjustable temples and integral lens with molded sideshields ensures a perfect fit and wide range of vision. Hard-coated polycarbonate lens. Meets ANSI Z87.1-1989 and CSA-Z94.3-92 Standards.

**Blue Frame/ Clear Lens.**

Order Number: 75701...\$5.25 each, \$4.73 (10 or more)



**SELLSTROM TECH-NOSPORTS II**

Soft foam cushioned brow, form fitted temples with wrap-around lens provide outstanding peripheral vision and optic clarity. Super soft, hypoallergenic silicone nose bridge. Meets ANSI Z87.1 standards.

**Black temple/clear lens.**

Order Number: 74801...\$5.25 each, \$4.73 (10 or more)



**FLEXIBLE GOGGLES**

**Flexible Cover Goggles – Clear lens, chemistry.**

Order Number: 88200...\$5.50 each, \$4.95 (10 or more)

**Flexible Cover Goggles – Clear lens. 060" thick, fog free.**

Order Number: 88210...\$6.95 each, \$6.26 (10 or more)



**WELDING GOGGLES**

**LiftFront Welder's Goggle – Tough, flexible vinyl, 2" x 4 1/4" lens area. Shade No. 5 filter & cover plate included.**

Order Number: 85550.....\$9.95

**Welding Plate – No. 5 shade. 2" x 4 1/4" lens. Replacement plate for No. 85550 goggles.**

Order Number: 04705-5.....\$3.75



**WELDING HELMETS**

**Welding Helmet** – 2" x 4-1/4" lift plate, includes No. 10 welding and cover plates.

Order Number: 28301.....\$49.95

**Welding Plate** – 2" x 4-1/4", No. 10 shade.  
Order Number: 16600-10.....\$2.50

**Cover Plate** – 2" x 4-1/4", plastic.  
Order Number: 19002.....\$.85



**Welding Helmet** – 4" x 5-1/4" lift plate, includes No. 10 welding and cover plates.

Order Number: 28901.....\$41.00

**Welding Plate** – 4" x 5-1/4", No. 10 shade.  
Order Number: 16710.....\$5.95

**Cover Plate** – 4" x 5-1/4", plastic.  
Order Number: 19004.....\$2.10

**SUPER TUFF HELMET**

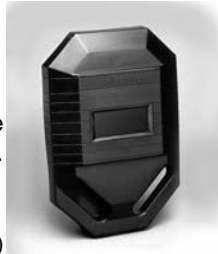
2" x 4-1/4" plate, with molded plate retainer, drop down ratchet headgear. All Sellstrom Helmets meet ANSI Z87.1-1979 Standards. Shade No. 10 plate & cover plate included.

Order Number: 28501.....\$36.50

**IRON MASK® – HAND HELD WELDING SHIELD**

Lightweight, easy-to-hold, comes with shade 10 plate, meets ANSI Z87.1 standards. Perfect for classroom demonstrations!

Order Number: 25000-10.....\$12.95 each,  
\$10.36 (10 or more)

**AQUATENE**

Water soluble—non-flammable detergent action that cleans fast. Safe for use on ferrous and nonferrous materials including aluminum. May be used to clean materials such as rubber and elastomers which would be damaged by solvents. Formulated to remove oils, greases, soft carbon, corrosion, oxides, varnishes, machining & finishing compounds. Mixes at 4 parts aquatene to 9 parts water. May be used at room temperature or heated up to 180 degrees for faster cleaning. Five gallon container.

Order Number: G-5W274 .....\$113.95

**GRAYMILLS SUPER AGITENE CLEANING SOLVENT**

Cleans better than petroleum solvents. A clear green parts cleaning solvent with a mild fresh odor for use in Graymills parts washers. Cleans faster than ordinary petroleum solvents, plus lanolin formulation reduces chances of skin irritation and chapping. Cleaner is stable and will not corrode metals. Flash point is 104 degrees F. Five gallon container.

Order Number: G-2W352 .....\$113.95

**ATD PARTS CLEANING BRUSH**

Long-lasting black nylon bristles, specially treated to retain their firmness and shape. Resistant to swelling or softening. Each bristle is "wave" crimped for greater fluid holding capacity.

Order Number: ATD8520 .....\$2.50

**DUST PAN**

Sturdy 1-piece. 16" wide, 7-1/2" deep. Baked enamel finish.

Order Number: 237 .....\$17.99

**INDUSTRIAL QUALITY FLOOR BRUSH**

Durene Plastic. Medium stiff bristles in center with finer bristles in the border. 3-1/4" Trim. 24" with handle and brace.

Order Number: 62-24 .....\$29.50

**GARAGE-STYLE FLOOR BRUSH**

Flat top hardwood block with 2-threaded handle holes. Staple set selected Palmyra fibre. 4" Trim. 24" with handle and brace.

Order Number: 70-24 .....\$26.00

**THREADED HANDLES**

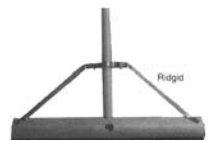
Straight-grained hardwood. Smooth sanded with clear lacquer finish. Standard floorbrush thread. 15/16" diameter, 6 ft long.

Order Number: 2001N.....\$7.95

**RIGID BRACE**

Ends fasten to block with screws and center clamps around handle. Legs 10" long with 16-1/2" spread.

Order Number: 111-6002 .....\$5.25

**COUNTER BRUSH**

Black Tamplene Plastic. Staple set in 1-3/4" wide shaped plastic block. Bristles are trimmed to 2-1/2"; brush part 8"; overall, 13".

Order Number: 258 .....\$7.95

**ALL-PURPOSE SUPER TUB**

Heavy-duty plastic. Easy clean-up. Tow rope (not included) can be added. Four cubic ft. capacity, tub size. 36" x 24" x 8".

Order Number: ST3608 .....\$19.95

